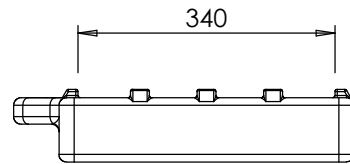
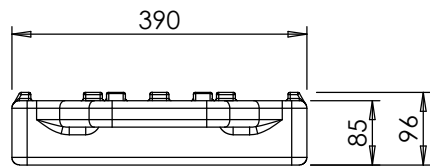
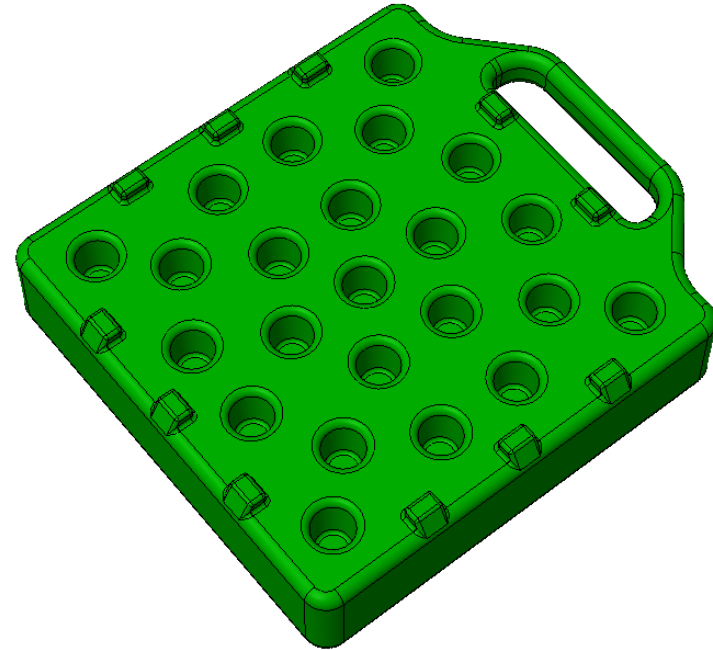
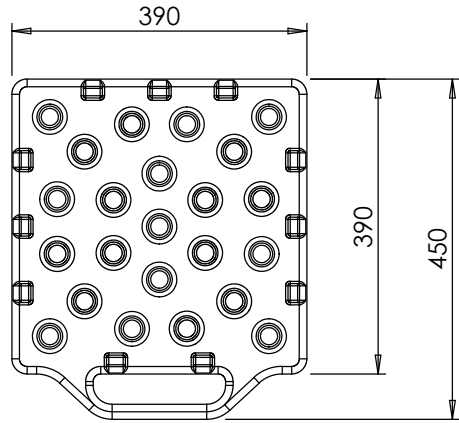


ALL DIMENSIONS ARE FINAL PRODUCT DIMENSIONS

"CONFIDENTIAL"



Gough Industries Pty. Ltd.  
 833 Ingham Road  
 Bohle, Townsville  
 P.O. Box 7570, Garbutt BC, Qld. 4814.  
 Telephone 07 47747606  
 Facsimile 07 47747608  
 A.C.N. 010 028 547

This drawing remains the property of Gough Industries Pty. Ltd. It is subject to Gough Industries Pty. Ltd.'s recall and must not be reproduced in part or whole or it's contents divulged to third parties without prior written approval from Gough Industries Pty Limited.

Signature	Date
D.HOLLIER	28.04.06
DRAWN	
DRN. CHK	
ENGINEER	
ENG. CHK	
Eng. APPROVAL	
CONTROLLED DOCUMENT	NO

Cranefoot 400

Manufacturing Details

SCALE

A4

Gough Plastics Dwg. No.  
**MAM700.1022-00**

REV

CAD FILE: S:\Products\Mining & Manufacture\Cranefoot 400\

No.	DATE	BY	DESCRIPTION	GOUGH APPROV.
			REVISION	

1

2

3

4

5

6