

GOUGH PLASTICS RURAL CATALOGUE

SEPTEMBER 2015



Caring for the **planet**
and its **people** with a **passion**

Diamond Grid



Cartage Tanks



PROVIDING INNOVATIVE SOLUTIONS



WaterSmart Troughs

Features and Benefits

- Simple installation, lightweight and user-friendly.
- Ideal for cattle, horses and other livestock.
- Perfectly suited to small numbers of animals.
- High quality float valve with 1" male connection.
- The float is out of the water.
- UV-stabilised, food-grade plastic for long life.
- Recess for your external pipework giving added protection.

Proudly supporting the National Breast Cancer Foundation's research programs with each pink float cover sold

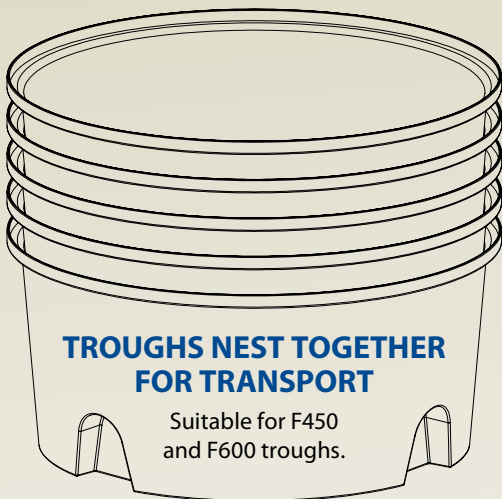


Float Cover		
Part Number	Description	Price*
FFAR800.4100	Float Cover NBCF Pink	\$56.00
FFAR800.4100.1	Float Cover Blue	\$56.00

WaterSmart Trough and Valve					
Part Number	Size	Diameter	Height	Weight	Price*
FFAR800.4200	200L	1025mm	460mm	18kg	\$292.00
FFAR800.4400	400L	1200mm	580mm	25kg	\$348.00
FFAR800.4600	600L	1480mm	580mm	32kg	\$404.00



LickRoof



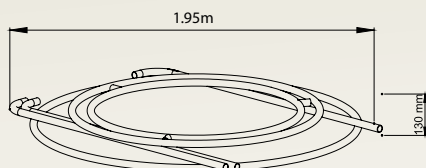
Roofs, Frames and Troughs nest together for transport

A cattle feed shelter designed to protect lick supplement from wet weather conditions.

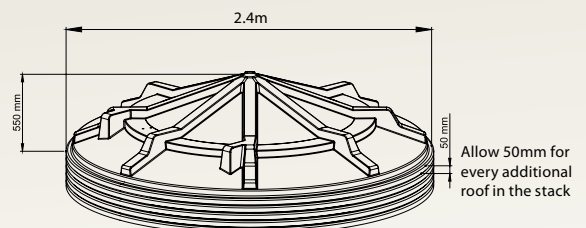


LickRoof		
Part Number	Description	Price*
FFAR800.2401.1	LickRoof, Frame & F450 Combo	\$1,250.00
FFAR800.2401.2	LickRoof, Frame & F600 Combo	\$1,430.00

FRAMES FLAT PACK FOR TRANSPORT
(Approx 68kg per frame)



ROOFS NEST TOGETHER FOR TRANSPORT
(Approx 40kg per roof)



Dimensions may vary by plus or minus 3% due to the rotational moulding process.

*All prices are inc GST, ex -TSV Factory (do not include delivery). Prices may be subject to change without notice.

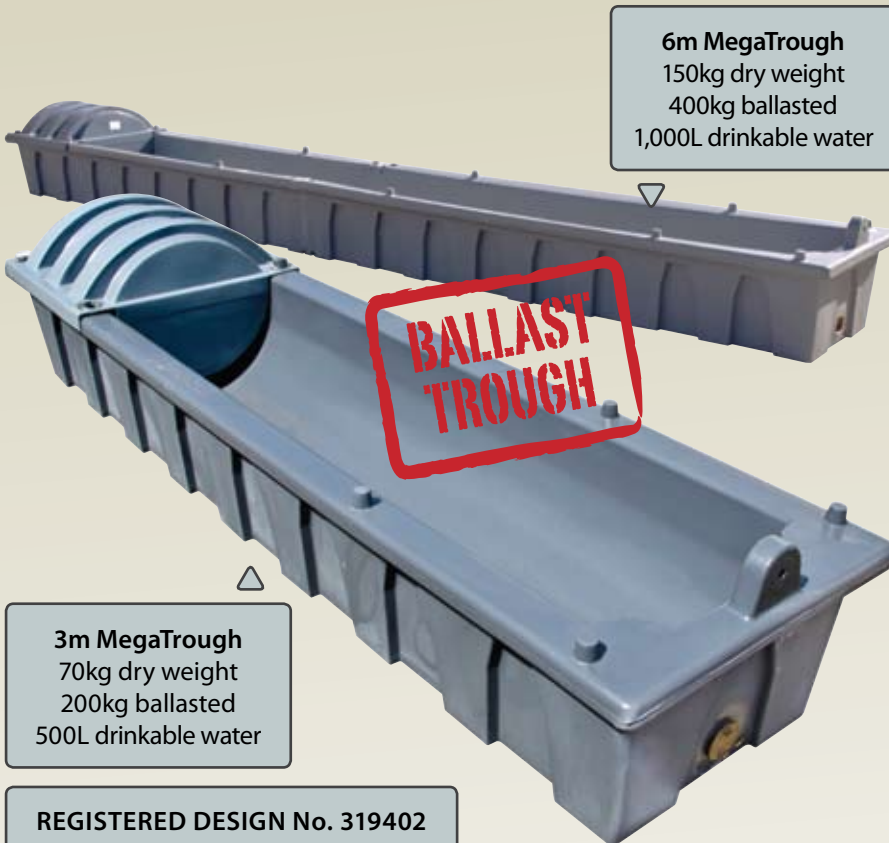
Long MegaTrough



**IN THE Paddock SINCE 2005,
FROM COOKTOWN TO THE
CURRY, FROM CHARLEVILLE
TO CHINCHILLA!**

Advantages

- Pick up from town in your own ute or truck
- Lightweight to transport and install by yourself
- Unique water ballast system within the hollow cavity
- Ballast makes it ideal for permanent installations
- Easy to empty and relocate if required
- Heavy-duty ribbed design to handle being knocked around
- The grey colour helps keep the water cooler

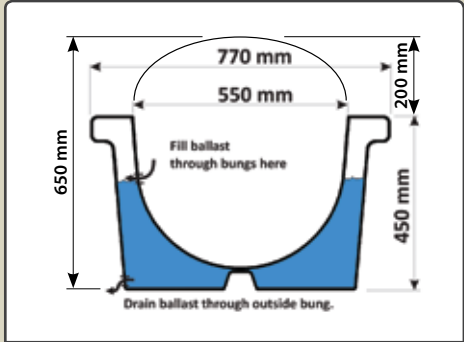


6m MegaTrough
150kg dry weight
400kg ballasted
1,000L drinkable water

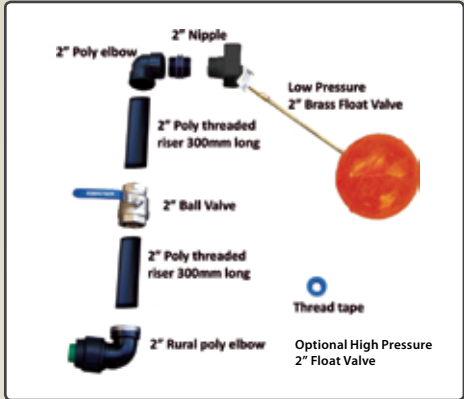
3m MegaTrough
70kg dry weight
200kg ballasted
500L drinkable water

REGISTERED DESIGN No. 319402

"Finally a decent poly stock trough!"
Resellers welcome
(07) 4758 6400



Cut-away view of Water Ballast



Long MegaTrough		
Part Number	Description	Price*
FFAR800.3000.3	3m Long MegaTrough with Float Cover	\$842.00
FFAR800.6000.2	6m Long MegaTrough with Float Cover	\$1,436.00
FFAR800.5000	Connection Kit	\$303.00

Dimensions may vary by plus or minus 3% due to the rotational moulding process.
*All prices are inc GST, ex -TSV Factory (do not include delivery). Prices may be subject to change without notice.

Round MegaTrough

**BALLAST
TROUGH**

Round MegaTrough		
Part Number	Description	Price*
FFAR800.7000.2	1,000L Round MegaTrough with Float Cover	\$1,010.00
FFAR800.8001	2" Connection Kit (see details page 4)	\$303.00

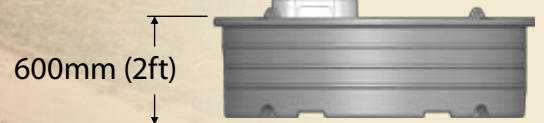
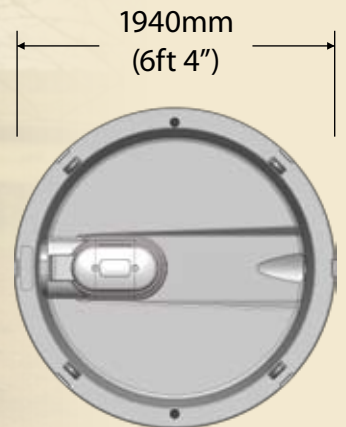


Heavy-duty 1,000L Stock Water Trough

Built like a brick outhouse - only a lot easier to shift and easier to clean!
Allowing 2ft per beast; approximately 10 head will fit around this trough.



Registered Design



Empty weight 100kg
Ballast weight 300kg

Dimensions may vary by plus or minus 3% due to the rotational moulding process.

*All prices are inc GST, ex -TSV Factory (do not include delivery). Prices may be subject to change without notice.

Round MegaTrough



Recessed Fittings

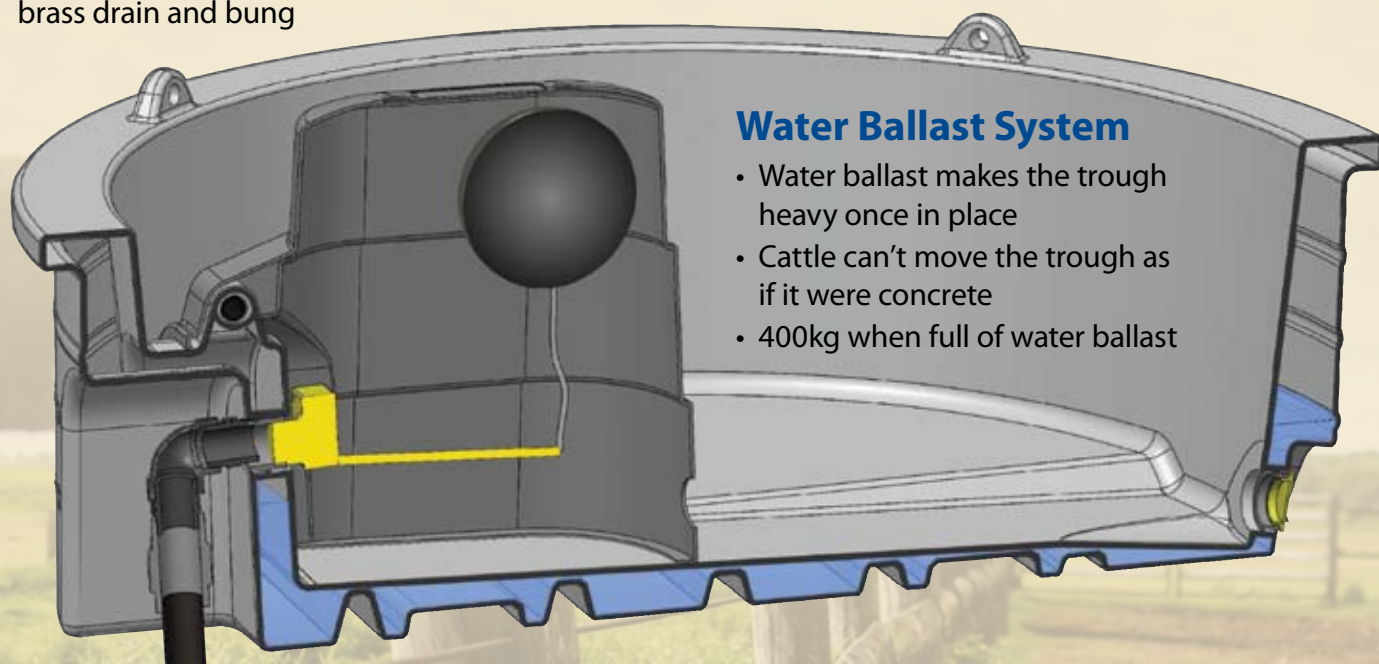
- Keep all the fittings tucked away from potential damage
- As you know, all these fittings aren't cheap to replace
- 2" brass inlet socket and 2 1/2" brass drain and bung

Easy to Move

- One person job to install or relocate
- You don't need a tractor or crane or need to be under 50

Easy to Install

- Drive into town and bring one home in your own ute
- Bigger it, throw a few in the back and save some trips



Water Ballast System

- Water ballast makes the trough heavy once in place
- Cattle can't move the trough as if it were concrete
- 400kg when full of water ballast



Easy to Keep Clean

- Sloping floor to large sunken drain



Connection Kit

- Floatcover can cover up to 9" ball float on 9" raindrop arm and chain

FeedSmart troughs, in the field for 15 years and still going strong!

Simon Gough



FeedSmart Troughs

Stock Feed and Water Troughs - Round

Part Number	Size	Diameter	Height	Price*
FFAR800.1000RGB	50L	640mm	365mm	\$79.00
FMAM500.1700	170L	725mm	585mm	\$135.00
FFAR800.1100RGB	195L	1100mm	280mm	\$123.00
FFAR800.1251RGB	380L	1250mm	400mm	\$258.00
FFAR800.1250RGB	450L	1250mm	540mm	\$269.00
FFAR800.1600RGB	600L	1285mm	600mm	\$359.00
FFAR800.1750RGB	750L	1570mm	570mm	\$393.00
FFAR800.2100VGN	2300L	2400mm	600mm	\$640.00

Stock Feed and Water Troughs - Rectangular

Part Number	Size	L x W x H	Price*
FFAR800.1300RGB	350L	2160 x 700 x 340mm	\$258.00
FFAR800.1480RGB	480L	2180 x 900 x 392mm	\$337.00

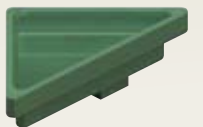
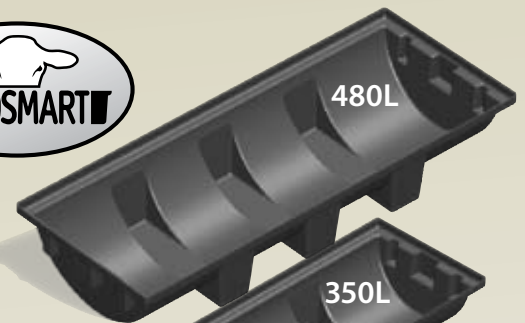
FeedSmart Trough Cover

Part Number	Colour	Diameter	Height	Price*
FFAR800.1610	Recycled Black	1.32m	0.15m	\$90.00
FFAR800.1611	Yellow	1.32m	0.15m	\$112.00
FFAR800.1612	Blue	1.32m	0.15m	\$112.00
FFAR800.1613	Grey	1.32m	0.15m	\$112.00

EzyLicker		
Part Number	Description	Price*
FFAR800.2003	EzyLicker 1060 (F380-F600)	\$236.00
FFAR800.2004	EzyLicker 1340 (F750)	\$292.00



Molasses getting dearer?
Floating Licker Discs will slow them down and save you money.



190L
Width: 1272mm
Height: 330mm
FFAR800.7000 \$449.00*

Dimensions may vary by plus or minus 3% due to the rotational moulding process.

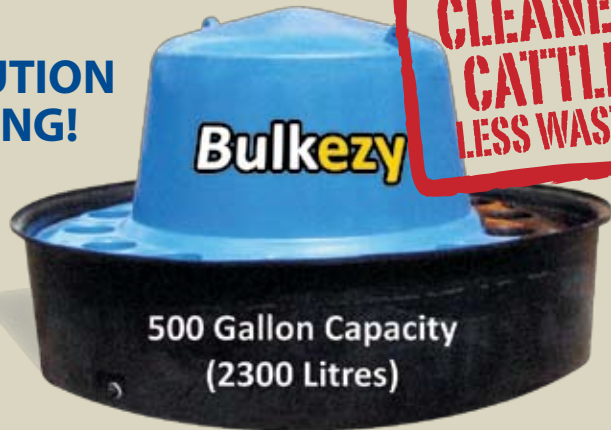
*All prices are inc GST, ex -TSV Factory (do not include delivery). Prices may be subject to change without notice.

Bulkezy Floating Barrier



**MOLASSES FEEDING
MADE EASY!
THE BEST SOLUTION
TO BULK FEEDING!**

**CLEANER
CATTLE
LESS WASTE**



Advantages

- Cheaper to buy than equivalent number of small troughs
- Don't need your own on-farm storage facility or cartage equipment if they are direct filled
- Bulk fill direct in paddock and take the hard work out of feeding
- Lugs in floor of trough help cattle get a grip and get out
- Floating centre barrier advantage
- Individual feed ports, less bullying
- Cleaner cattle, less mess
- Relocatable

Allowing 2ft per beast; approximately 11 head will fit around this trough.

Bulkezy		
Part Number	Description	Price*
FFAR800.2500RGB	System, inc Barrier and Trough	\$1,122.00

PATENT No. 2003100803, REGISTERED DESIGN No. 324798



Custom Fabrication

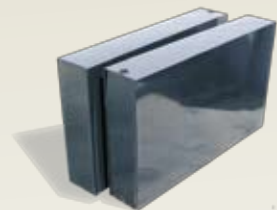
Plastic Welding and Fabrication

We have a highly skilled team of Plastic Fabricators who can design, manufacture and repair products to suit your needs.

- No job too small or too large to consider
- On-site repairs, welding and fabrication
- Prototypes



Fabricated Hoppers



Water Tanks for Gooseneck Trailers etc



Bontech Dam Pump Floats

Dimensions may vary by plus or minus 3% due to the rotational moulding process.

*All prices are inc GST, ex -TSV Factory (do not include delivery). Prices may be subject to change without notice.

Litre Tanks



10,000L



7,500L



5,500L



5,000L Tall



5,000L Short



3,000L



2,500L



2,000L Tall



1,450L



1,000L



600L

Round Tanks

Part Number	Litres	Dia	Height	Price*
FTAN.ST10000BLK	10,000L	2.59m	2.28m	\$1,728.00
FTAN.ST07500BLK	7,500L	2.25m	2.20m	\$1,418.00
FTAN.ST05500BLK	5,500L	2.44m	1.36m	\$1,111.00
FTAN.TL05000BLK	5,000L Tall	1.75m	2.35m	\$976.00
FTAN.STS5000BLK	5,000L Short	2.05m	1.82m	\$976.00

Round Tanks (Continued)

Part Number	Litres	Dia	Height	Price*
FTAN.ST03000BLK	3,000L	1.60m	1.85m	\$886.00
FTAN.ST02500BLK	2,500L	1.60m	1.52m	\$741.00
FTAN.ST02000BLK	2,000L Tall	1.10m	2.48m	\$797.00
FTAN.ST01500BLK	1,450L	1.25m	1.32m	\$606.00
FTAN.TL01000BLK	1,000L Tall	0.90m	1.85m	\$527.00
FTAN.ST00600BLK	600L	0.82m	1.26m	\$449.00



5,000L Slim



5,000L Slim Combo



3,000L Slim



1,350L Slim



375L

Slimline Tanks

Part Number	Litres	Length	Width	Height	Price*
FTAN.SL05000BLK	5,000L Slim	2.60m	1.26m	2.10m	\$1,785.00
FTAN.SLC05000BLK	5,000L Slim Combo	4.50m	0.90m	1.85m	\$2,816.00
FTAN.SL03000BLK	3,000L Slim	2.70m	0.85m	2.10m	\$1,225.00
FTAN.ST01350BLK	1,350L Slim	1.60m	0.75m	1.62m	\$909.00
FTAN.ST00375BLK	375L Oval	1.19m	0.60m	0.79m	\$348.00

All tanks made from food grade polyethylene - no taste, no smell. Dimensions may vary by plus or minus 3% due to the rotational moulding process.
*All prices are inc GST, ex -TSV Factory (do not include delivery). Prices may be subject to change without notice.

Tuff-A-Box

T900 Highline (190L)
 Overall Dimensions (mm):
 900 x 550 x 550
 Internal Dimensions (mm):
 775 x 450 x 455
 FBOX804.9000H \$426.00*

T450 (64L)
 Overall Dimensions (mm):
 450 x 450 x 450
 Internal Dimensions (mm):
 385 x 385 x 430
 FBOX802.6400 \$258.00*

1000L Cube (1000L)
 Overall Dimensions (mm):
 Top - 1150 x 1054 x 1215
 Internal Dimensions (mm):
 1020 x 1020 x 940
 FMAM300.1000 \$1,010.00*

T1200 Lowline (158L)
 Overall Dimensions (mm):
 1200 x 550 x 410
 Internal Dimensions (mm):
 1085 x 450 x 325
 FBOX804.1200L \$482.00*



T900 Lowline (110L)
 Overall Dimensions (mm):
 900 x 550 x 410
 Internal Dimensions (mm):
 785 x 455 x 325
 FBOX804.9000L \$370.00*

Cabin-Box (100L)
 Overall Dimensions (mm):
 1500 x 350 x 350
 Internal Dimensions (mm):
 1430 x 240 x 310
 FBOX804.0175 \$471.00*

T1200 Highline (260L)
 Overall Dimensions (mm):
 1200 x 550 x 550
 Internal Dimensions (mm):
 1075 x 450 x 455
 FBOX804.1200H \$539.00*

New Closed Cell Rubber Seal
 For improved performance

Checkerplate Top Surface
 Giving that modern and rugged look

Thicker Lip
 For a stronger edge

New Higher, Rounder Sealing Rim
 For excellent water resistance

New Sealed Rivets with Backing Washers
 100% leak-proof and extra tear-out strength

Buy online at www.gough.com.au and save \$!

Dimensions may vary by plus or minus 3% due to the rotational moulding process.
 *All prices are inc GST, ex -TSV Factory (do not include delivery). Prices may be subject to change without notice.

Underbody Gear

Buy online at www.gough.com.au and save \$!

All products available in black or grey!

25L Handwash Tank



- Your company logo can be added
- Universal right or left hand mounting

Length: 580mm
Width: 210mm
Height: 420mm
FBOX401.2550 \$258.00*

24L Underbody Water Tank



- Filler bung on each end
- Easy-fit bracket

Length: 425mm
Width: 205mm
Height: 309mm
FBOX401.2500 \$168.00*

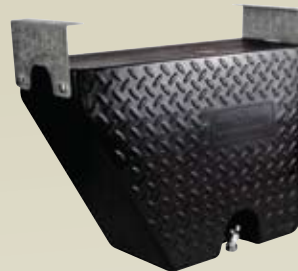
27L Underbody Water Tank



- Suits most traybacks and trailers
- Choice of standard end brackets or galvanised carrier

Length: 440mm
Width: 260mm
Height: 400mm
FBOX401.2700 \$281.00* (HD)
FBOX402.2705 \$180.00* (STD)

30L Checkerplate Water Tank



- Universal right or left hand mounting
- Standard end brackets supplied
- Checkerplate surface

Length: 580mm
Width: 210mm
Height: 420mm
FBOX401.3001 \$189.00*

40L Underbody Water Tank



- Suits most traybacks and trailers
- Standard end brackets supplied

Length: 530mm
Width: 260mm
Height: 410mm
FBOX401.4000 \$247.00*

70L Slimline Water Tank



- Tank, tap, filler tube, outlet tube, tap and mounting brackets supplied

Length: 1080mm
Width: 810mm
Height: 115mm
FBOX405.8000 \$595.00*

24L Underbody Toolbox



Length: 425mm
Width: 205mm
Height: 309mm
FBOX406.2400 \$199.00*

40L Underbody Toolbox



Length: 530mm
Width: 275mm
Height: 410mm
FBOX406.4000 \$303.00*

30L Underbody Toolbox



NOW ALSO AVAILABLE FOR RHS

Length: 580mm
Width: 210mm
Height: 420mm
FBOX406.3001 \$214.00*

- Holds ropes, straps, jack, gloves and recovery gear • Easy-fit bracket

Dimensions may vary by plus or minus 3% due to the rotational moulding process.

*All prices are inc GST, ex -TSV Factory (do not include delivery). Prices may be subject to change without notice.

Cartage Tanks



**140 Gal
640L Trans**
\$942.00*

Length: 1,220mm
Width: 1,160mm
Height: 735mm
FFAR500.6400



**215 Gal
1000L Trans**
\$1,122.00*

Length: 1,220mm
Width: 1,160mm
Height: 1,050mm
FFAR500.1000



**650 Gal
3000L Trans**
\$2,210.00*

Length: 2,220mm
Width: 1,300mm
Height: 1,500mm
FFAR500.3002

Frame sold separately. Price does not include frame.

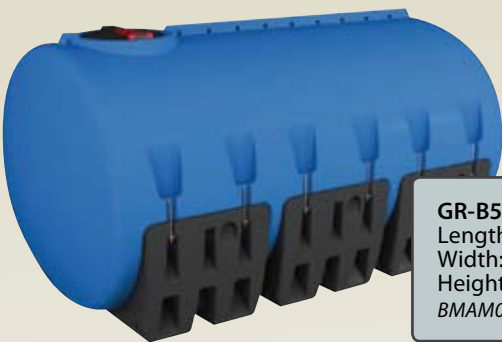
Bunded Diesel Tank



GR-UB400D (400L)
Length: 1340mm
Width: 1300mm
Height: 870mm
BMAM013 \$2,906.00*



GR-G3000 (3000L)
Length: 2640mm
Width: 1450mm
Height: 1155mm
BMAM014 \$3,927.00*



GR-B5000 (5000L)
Length: 3075mm
Width: 1800mm
Height: 1560mm
BMAM015 \$6,452.00*



GR-B13000 (13000L)
Length: 4335mm
Width: 2340mm
Height: 1860mm
BMAM016 \$17,447.00*



**ASK US ABOUT A
CUSTOM MADE
TRANSPORTER TANK**

Custom-made water, chemical or molasses cartage tank



Custom-made spray tanker

Dimensions may vary by plus or minus 3% due to the rotational moulding process.

*All prices are inc GST, ex -TSV Factory (do not include delivery). Prices may be subject to change without notice.

Diamond Grid

A new generation in surface stabilisation and erosion control grids

Diamond Grid is the perfect solution for many rural applications from general muddy areas, to stable floors and feed/water troughs.

The areas around water and feed troughs are always wet and muddy and being eroded! Diamond Grid has solved the problem by giving you a well draining, solid surface for both livestock and human to stand on.



Product	Squares Required	Price* (Diamond Grid only)
200L WaterSmart Trough	15	\$195.00
400L WaterSmart Trough	24	\$312.00
600L WaterSmart Trough	30	\$390.00
1000L Round MegaTrough	40	\$520.00
3M Long MegaTrough	42	\$546.00
6M Long MegaTrough	84	\$1092.00
Individual Grid 600mm x 400mm <i>BMAM020</i>		\$13.00

*All prices are inc GST, ex -TSV Factory (do not include delivery). Prices may be subject to change without notice.



Caring for the planet
and its people with a passion

For more information about these great products:

CALL 1800 069 805

833 Ingham Rd, Bohle TOWNSVILLE

Ph: (07) 4758 6400

Fax: (07) 4774 7608

sales@gough.com.au

www.gough.com.au



ARMA Member

2.4M Rectangular MegaTrough

NEW

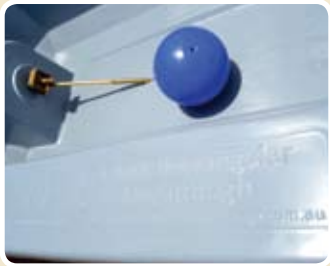
The Freight-friendly Trough

Long, short, wide or round, there's a Gough Plastics MegaTrough just right for your paddock!

**BALLAST
TROUGH**



Length: 2,400mm
Width: 1,200mm
Height: 600mm
FFAR800.2600.1
\$1,034.00 inc. GST



Features and Benefits:

- Transports in two pallet spaces, i.e. height for four stacked = 2.6m
- Pick up from town in your own ute or truck
- Lightweight to transport and install by yourself
- Unique water ballast system within the hollow cavity
- Ballast makes it ideal for permanent installations
- Nesting lugs
- Recessed fittings and float cover position allow access from every angle
- Heavy-duty ribbed design to handle being knocked around
- The grey colour helps keep the water cooler
- Easy to empty and relocate if required
- Dry weight = 100kg
- Ballast weight = 300kg
- Drinkable water = 1,000L



Caring for the planet
and its people with a passion

For more information about this great product:

CALL 1800 069 805

833 Ingham Rd, Bohle TOWNSVILLE

Ph: (07) 4758 6400

Fax: (07) 4774 7608

sales@gough.com.au

www.gough.com.au



ARMA Member