

DOMESTIC CATALOGUE

JULY 2015
(including prices)



THE FREEDOM TO WATER YOUR WAY



Conserve Australia's most precious resource
and help with your water needs.



Caring for the planet
and its people with a passion



Locally Manufactured



10,000L



7,500L



5,500L



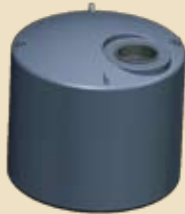
5,000L Tall



5,000L Short



3,000L



2,500L



2,000L Tall



1,450L



1,000L



600L

| Round Tanks | | | | |
|-----------------|--------------|-------|--------|------------|
| PART NUMBER | LITRES | DIA | HEIGHT | PRICE* |
| FTAN.ST10000BLK | 10,000L | 2.59m | 2.28m | \$1,728.00 |
| FTAN.ST07500BLK | 7,500L | 2.25m | 2.20m | \$1,418.00 |
| FTAN.ST05500BLK | 5,500L | 2.44m | 1.36m | \$1,111.00 |
| FTAN.TL05000BLK | 5,000L Tall | 1.75m | 2.35m | \$976.00 |
| FTAN.STS5000BLK | 5,000L Short | 2.05m | 1.82m | \$976.00 |
| FTAN.ST03000BLK | 3,000L | 1.60m | 1.85m | \$886.00 |
| FTAN.ST02500BLK | 2,500L | 1.60m | 1.52m | \$741.00 |
| FTAN.ST02000BLK | 2,000L Tall | 1.10m | 2.48m | \$797.00 |
| FTAN.ST01500BLK | 1,450L | 1.25m | 1.32m | \$606.00 |
| FTAN.TL01000BLK | 1,000L Tall | 0.90m | 1.85m | \$527.00 |
| FTAN.ST00600BLK | 600L | 0.82m | 1.26m | \$449.00 |

All tanks made from food grade polyethylene - no taste, no smell. Dimensions may vary by plus or minus 3% due to the rotational moulding process.
 *All prices are inc GST, ex -TSV Factory (do not include delivery). Prices may be subject to change without notice.

Gough Water Tanks



5,000L Slim



5,000L Slim Combo



3,000L Slim



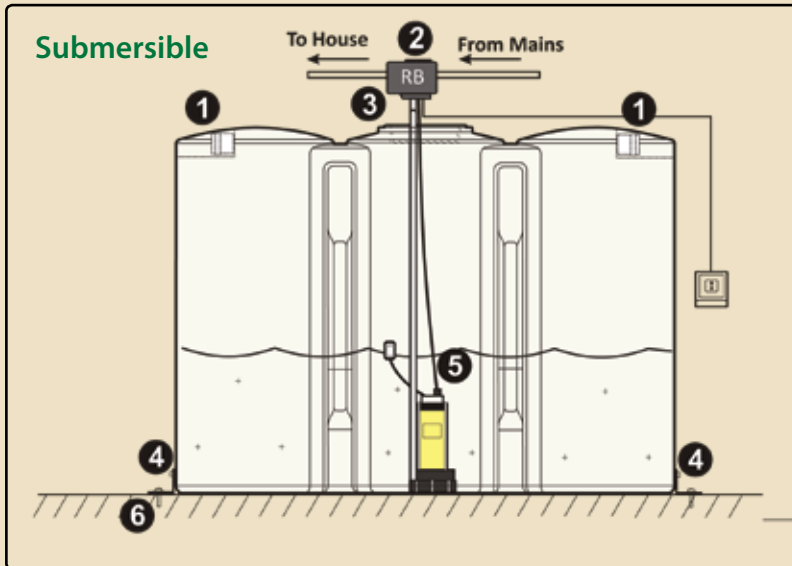
1,350L Slim



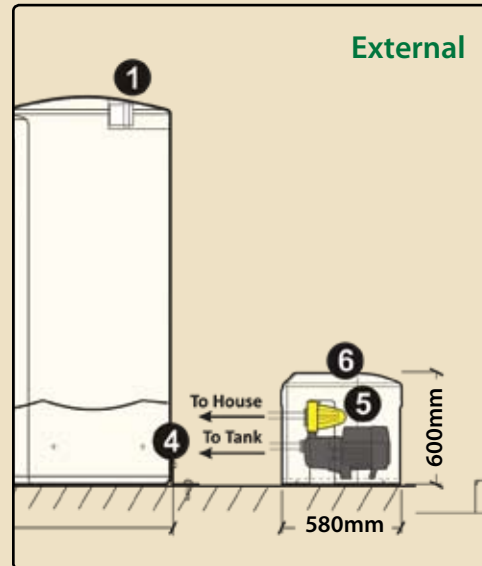
375L

Slimline Tanks

| PART NUMBER | LITRES | LENGTH | WIDTH | HEIGHT | PRICE* |
|------------------|-------------------|--------|-------|--------|------------|
| FTAN.SL05000BLK | 5,000L Slim | 2.60m | 1.26m | 2.10m | \$1,785.00 |
| FTAN.SLC05000BLK | 5,000L Slim Combo | 4.50m | 0.90m | 1.85m | \$2,816.00 |
| FTAN.SL03000BLK | 3,000L Slim | 2.70m | 0.85m | 2.10m | \$1,225.00 |
| FTAN.ST01350BLK | 1,350L Slim | 1.60m | 0.75m | 1.62m | \$909.00 |
| FTAN.ST00375BLK | 375L Oval | 1.19m | 0.60m | 0.79m | \$348.00 |



OR



Stainless Steel Braided Hose

Interconnects base of cylinders at the rear of the tank (1" diameter).



Optional: Concrete hold downs (x4).
Certified to AS1170.2 Region C - available on request.

All tanks made from food grade polyethylene - no taste, no smell. Dimensions may vary by plus or minus 3% due to the rotational moulding process.
*All prices are inc GST, ex -TSV Factory (do not include delivery). Prices may be subject to change without notice.



Quality Davey and Silver Series® Pump Offers

- 2 Year Warranty
- Factory Backed
- Smooth Running
- 200 - 300kpa

PolySlab Pump Cover

- Strong, lightweight, recycled
- Designed in consultation with Australian and International pump manufacturers

BWAT0001 \$90.00*



For Larger Homes

Silver Series® SJ60-08PC

- Australian assembled
- Approx. 60lpm
- Other options available

PARTAC1206 \$730.00*



For Medium Homes

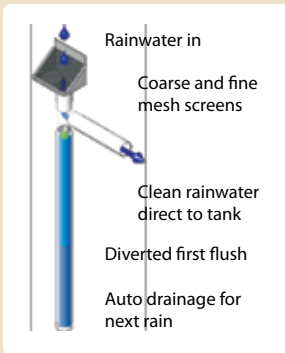
Silver Series® SJ35-04PC

- Australian assembled
- 30 - 40lpm
- Other options available

PARTAC1205 \$393.00*



First Flush Water Diverter and Leaf Eater



Water Diverter
PARTAC0090
\$45.00*

Leaf Eater
PARTAC0091
\$56.00*

Leaf Strainer and Light Guard

- No mosquitoes or leaves in your tank
- No sun means no algae
- Stainless steel mesh

PARTAC0654 \$26.40*



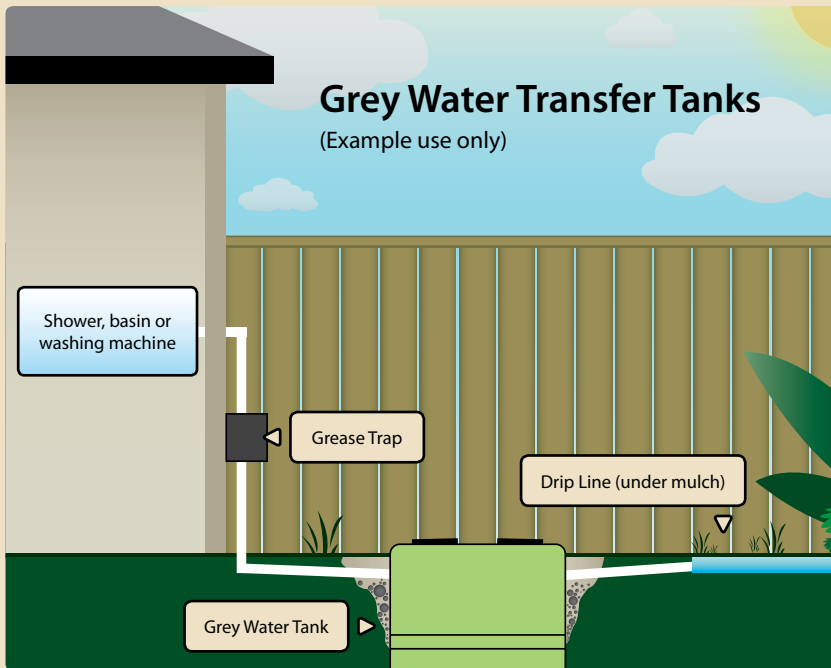
Connection Kits

- 2" Kit standard on all 10,000L tanks.
- Kit consists of flexi hose, s/s valve, hose clamps and thread tape.
- 1" Kit is an optional extra on all other tanks.

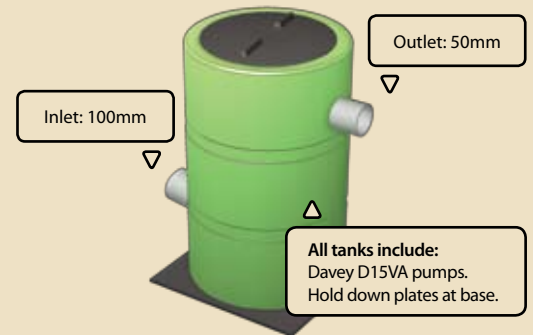


1" Outlet Kit
FTAN204.0059 \$45.00*

2" Outlet Kit
FTAN204.0058 \$79.00*



Grey Water Transfer Tanks
(Example use only)



600L Tank

Diameter: 815mm Height: 1315

- 50mm outlet standard at 940mm from base (customisable)
 - 100mm inlet standard at 400mm from base (customisable)
- FENV900.0100 \$1694.00*

200L Tank

Diameter: 560mm Height: 900mm

- 50mm outlet standard at 850mm from base (customisable)
 - 100mm inlet standard at 400mm from base (customisable)
- FENV900.0200 \$1403.00*

*All prices are inc GST, ex -TSV Factory (do not include delivery). Prices may be subject to change without notice.



Caring for the planet and its people with a passion

For more information about these great products:

CALL 1800 069 805

833 Ingham Rd, Bohle TOWNSVILLE

Ph: (07) 4758 6400

Fax: (07) 4774 7608

sales@gough.com.au

www.gough.com.au



ARMA Member