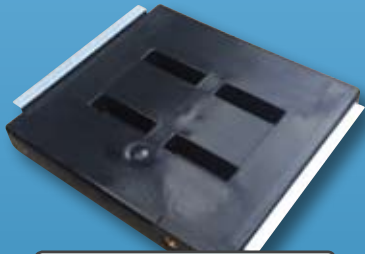




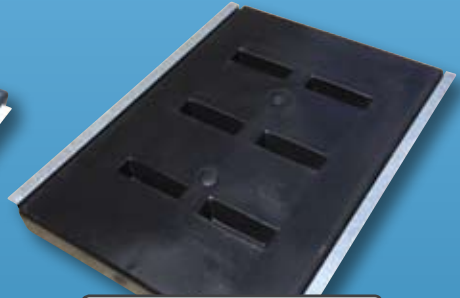
# Slimline Underbody Water Tanks



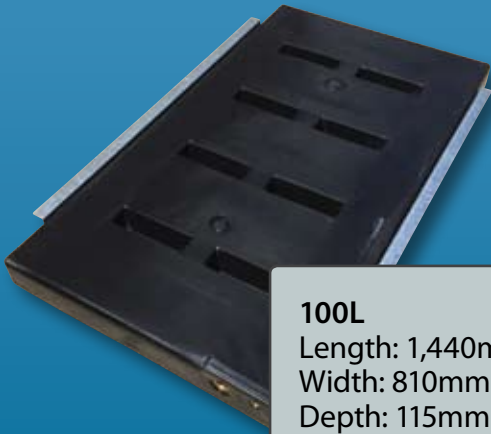
**50L**  
Length: 750mm  
Width: 810mm  
Depth: 115mm



**70L**  
Length: 1,080mm  
Width: 810mm  
Depth: 115mm



**80L**  
Length: 1,180mm  
Width: 810mm  
Depth: 115mm



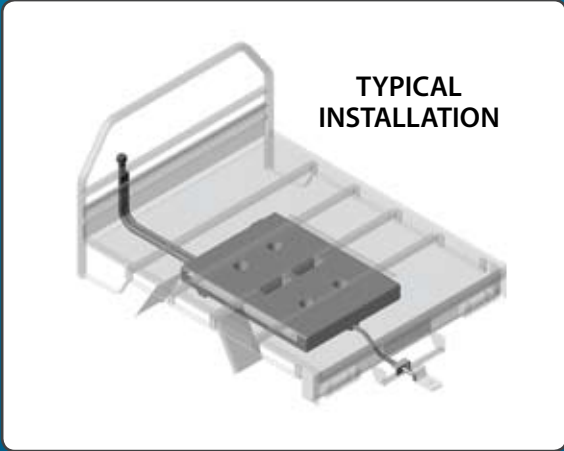
**100L**  
Length: 1,440mm  
Width: 810mm  
Depth: 115mm



**Optional Hose Kits**

## Features and Benefits:

- Mounting brackets supplied, hose kit optional
- Easy to fill
- One piece PE
- Mount underneath and out of sight or can be mounted vertically
- Diesel is available in all sizes, grey in colour
- Strong, tough, reliable, no straps required



**TYPICAL INSTALLATION**



Caring for the planet and its people with a passion

For more information about these great products:

**CALL 1800 069 805**

833 Ingham Rd, Bohle TOWNSVILLE

Ph: (07) 4758 6400

Fax: (07) 4774 7608

sales@gough.com.au

www.gough.com.au



ARMA Member