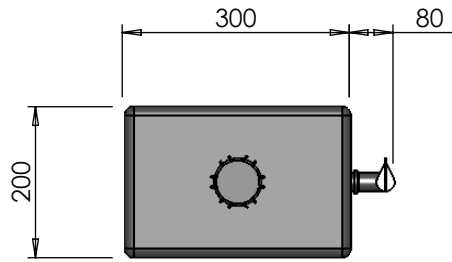
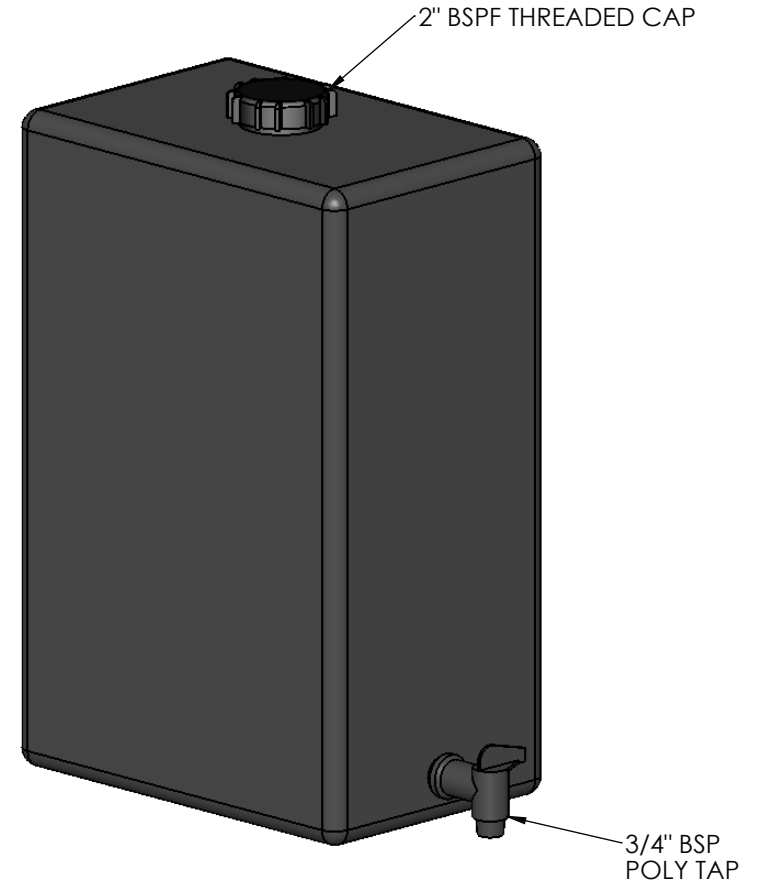


DO NOT SCALE

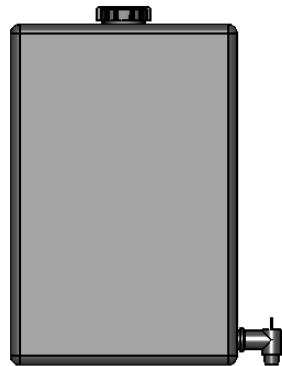
DIMENSIONS MAY VARY BY PLUS OR MINUS 2.5%
DUE TO THE ROTATIONAL MOULDING PROCESS



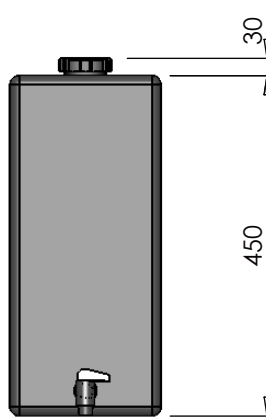
TOP VIEW



PICTORIAL VIEW
SCALE (1:5)



FRONT VIEW



SIDE VIEW



Gough Industries Pty. Ltd.
833 Ingham Road
Bohle, Townsville
P.O. Box 7570, Garbutt BC, Qld. 4814.
Telephone 07 47747606
Facsimile 07 47747608
A.C.N. 010 028 547

| | |
|---------------|---------|
| Signature | Date |
| S.NAGY | 1.02.06 |
| DRAWN | |
| DRN. CHK | |
| ENGINEER | |
| ENG. CHK | |
| Eng. APPROVAL | |

20L RECTANGULAR TANK

COMPONENT DETAILS

| | | | | |
|-------|------|----|---|-----|
| SCALE | 1:10 | A4 | Gough Plastics Drg. No. BOX408.0200-01 | REV |
|-------|------|----|---|-----|

This drawing remains the property of Gough Industries Pty. Ltd.
It is subject to Gough Industries Pty. Ltd.'s recall and must not
be reproduced in part or whole or it's contents divulged to third parties
without prior written approval from Gough Industries Pty Limited.

CONTROLLED DOCUMENT NO

CAD FILE: S:\Products\Domestic\Underbodies\Archive\20 ltr Rectangular Tank\Drawings\

| No. | DATE | BY | DESCRIPTION | GOUGH APPROV. |
|-----|------|----|-------------|---------------|
| | | | REVISION | |