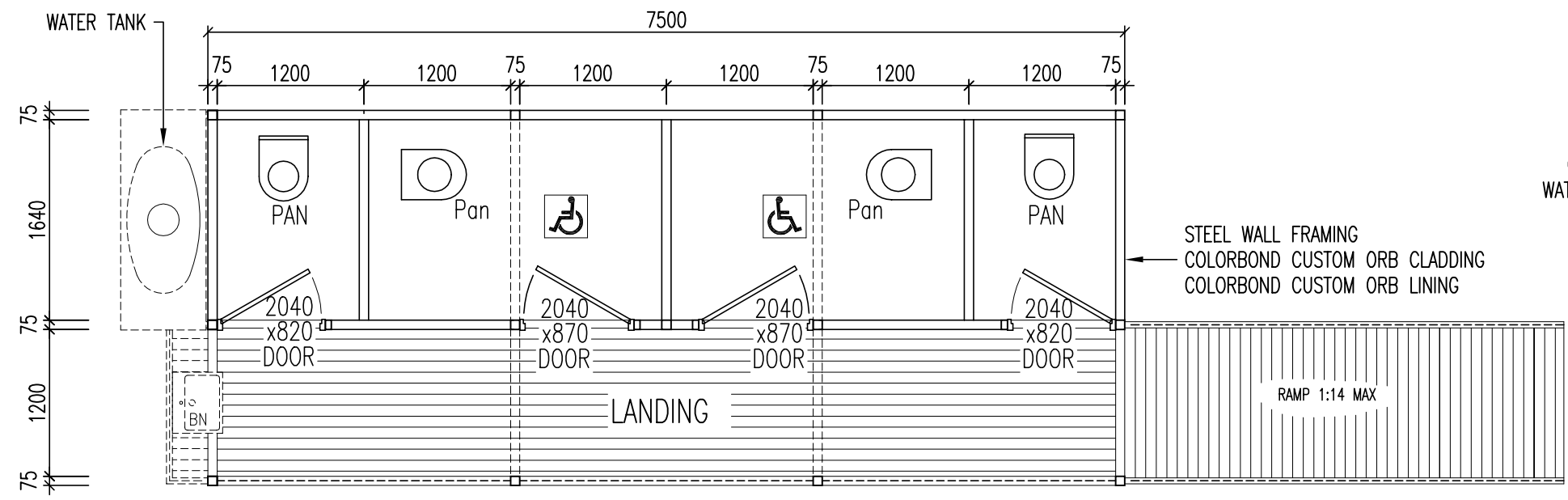
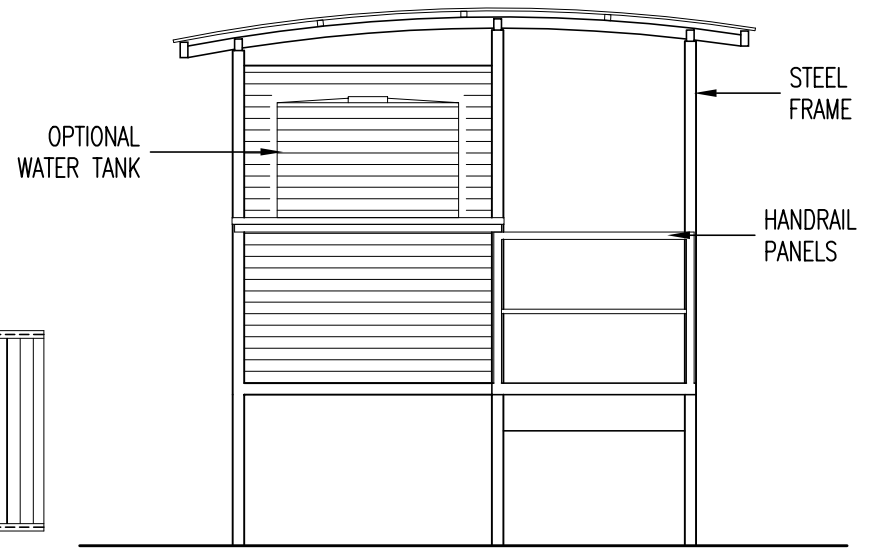


ELEVATION
(1:50)



PLAN
(1:50)



END VIEW
(1:50)

				 GOUGH PLASTICS Custom Rotational Moulders	Gough Industries Pty. Ltd. 833 Ingham Road Bohle, Townsville P.O. Box 1258, Aitkenvale, Qld. 4814. Telephone 07 47747606 Facsimile 07 47747608 A.C.N. 010 028 547	Signature	Date	PREFABRICATED AMENITIES BUILDING 'EASTBROOK' EB-2C2D					
						AGE	24-09-01						
				This drawing remains the property of Gough Industries Pty. Ltd. It is subject to Gough Industries Pty. Ltd.'s recall and must not be reproduced in part or whole or it's contents divulged to third parties without prior written approval from Gough Industries Pty Limited.	DRAWN DRN. CHK ENGINEER ENG. CHK SUBMITTED FOR APPR. Eng. APPROVAL			SCALE: AS NOTED	A3	Gough Plastics Drg. No.	0	REV	
										EB-2C2D-101			
No.	DATE	BY	DESCRIPTION	GOUGH	APPROV.	EDIT DATE:		CAD FILE :					