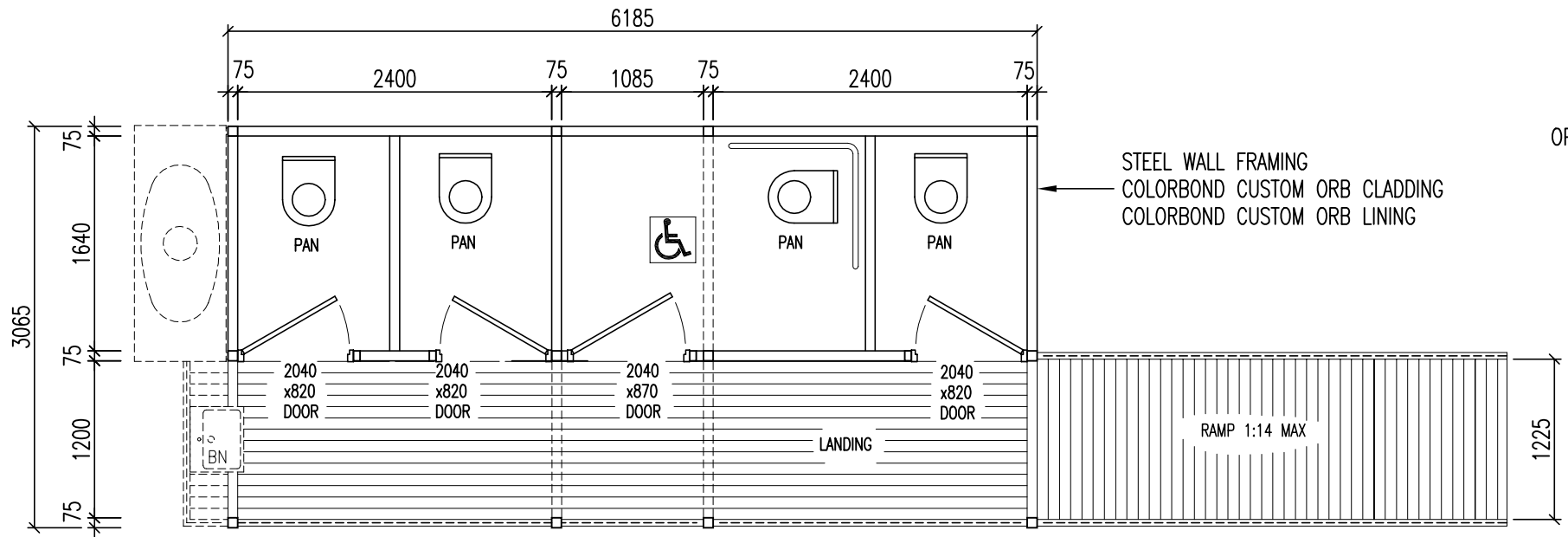
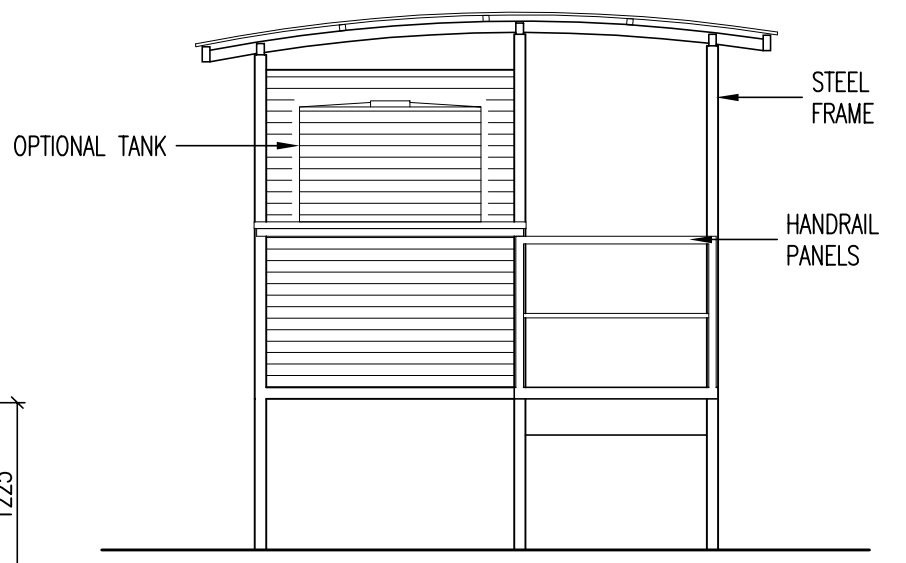


**ELEVATION**  
(1:50)

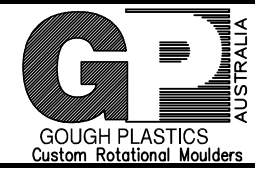


**PLAN**  
(1:50)



**END VIEW**  
(1:50)

No.	DATE	BY	DESCRIPTION	GOUGH	APPROV.
REVISION					

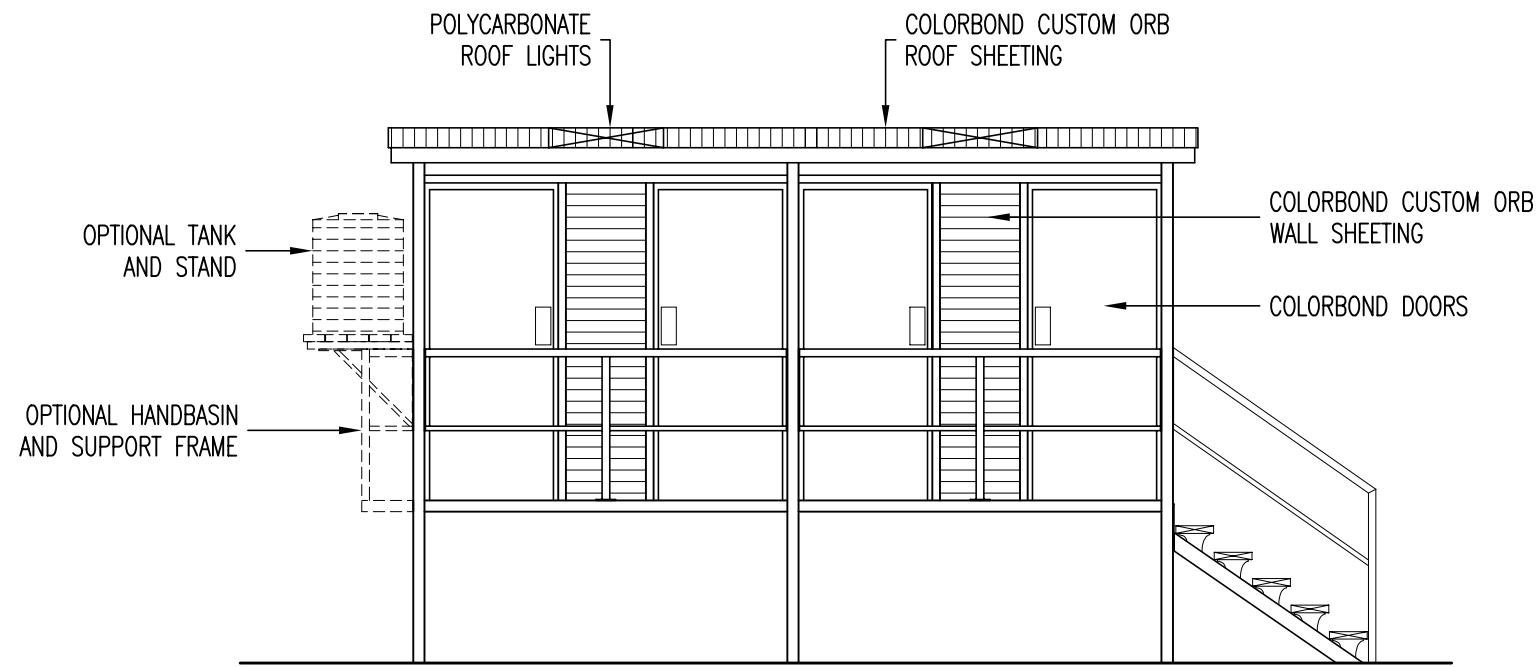


Gough Industries Pty. Ltd.  
833 Ingham Road  
Bohle, Townsville  
P.O. Box 1258, Aitkenvale, Qld. 4814.  
Telephone 07 47747606  
Facsimile 07 47747608  
A.C.N. 010 028 547

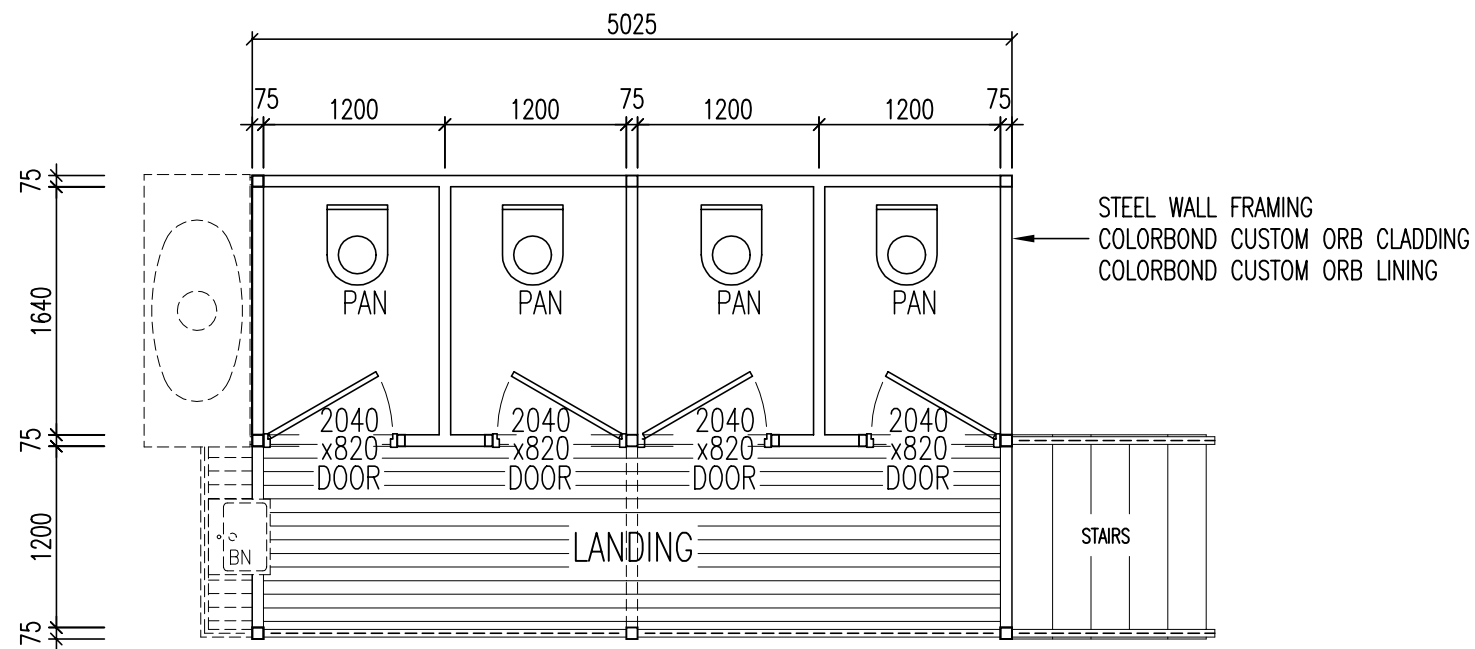
This drawing remains the property of Gough Industries Pty. Ltd. It is subject to Gough Industries Pty. Ltd.'s recall and must not be reproduced in part or whole or it's contents divulged to third parties without prior written approval from Gough Industries Pty Limited.

Signature	AGE	Date	21-09-01
<b>DRAWN</b>			
<b>DRN. CHK</b>			
<b>ENGINEER</b>			
<b>ENG. CHK</b>			
<b>SUBMITTED FOR APPR.</b>			
<b>Eng. APPROVAL</b>			

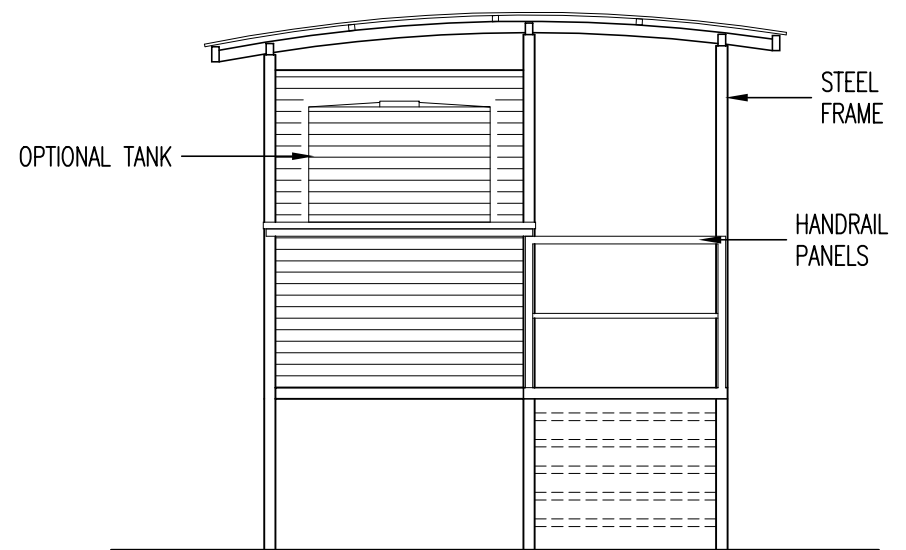
<p>PREFABRICATED AMENITIES BUILDING 'EASTBROOK' EB-3C1D</p>			
SCALE: AS NOTED	A3	Gough Plastics Drg. No. EB-3C1D-101	0
EDIT DATE:	CAD FILE :		




**ELEVATION**  
(1:50)



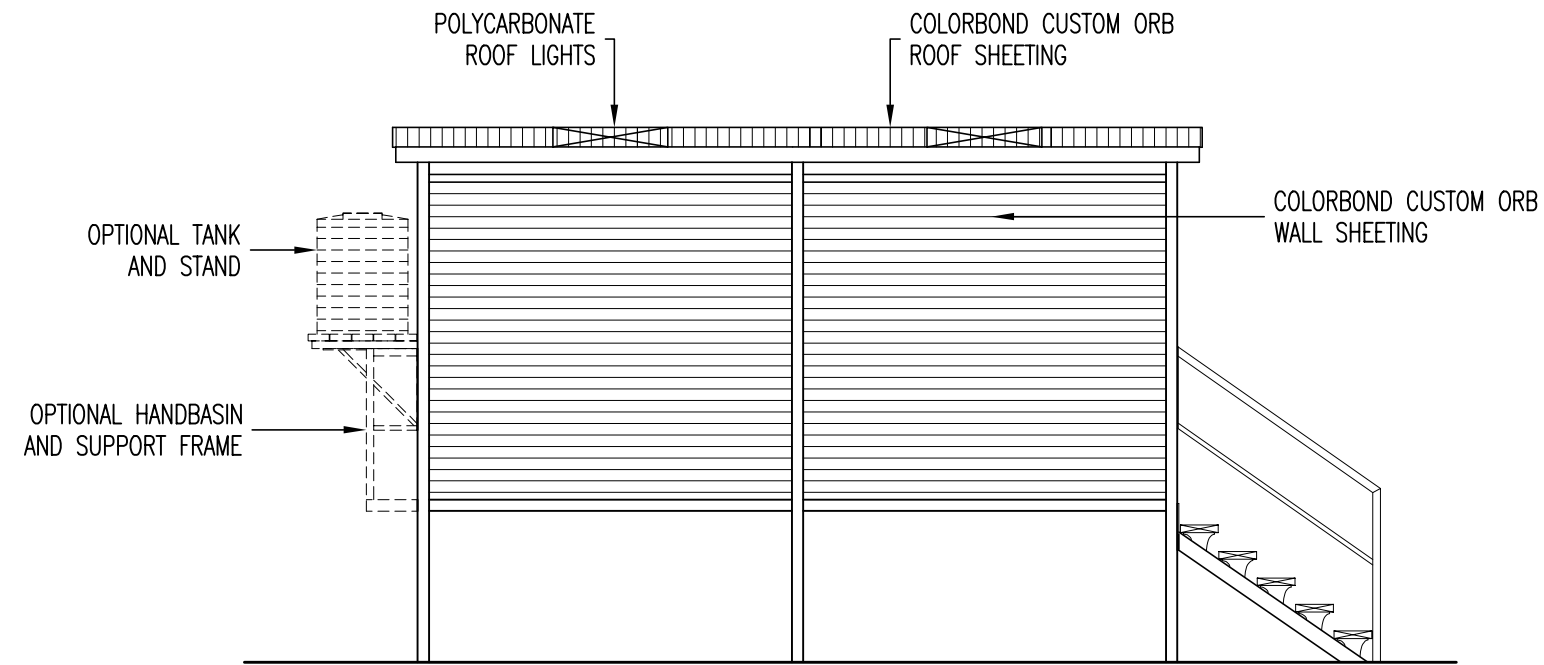
**PLAN**  
(1:50)



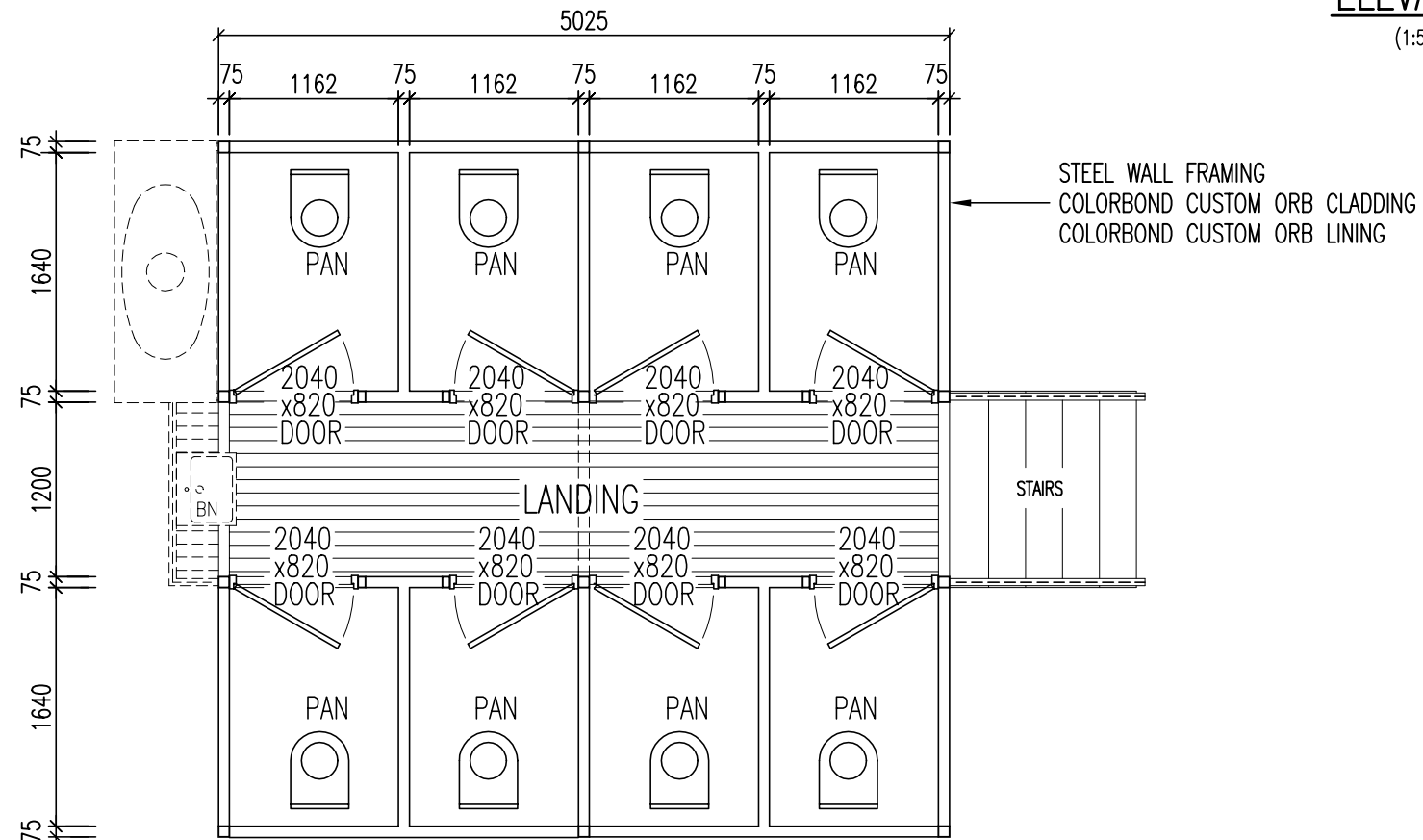
**END VIEW**  
(1:50)

				 <p>Gough Industries Pty. Ltd. 833 Ingham Road Bohle, Townsville P.O. Box 1258, Aitkenvale, Qld. 4814. Telephone 07 47747606 Facsimile 07 47747608 A.C.N. 010 028 547</p>	Signature	Date	<p>PREFABRICATED AMENITIES BUILDING 'EASTBROOK' EB-4C</p>				
					AGE	21-09-01					
				DRWN			<p>Gough Plastics Drg. No. EB-4C-101</p>				
				DRN. CHK							
				ENGINEER			<p>SCALE: AS NOTED A3</p>				
				ENG. CHK							
				SUBMITTED FOR APPR.			<p>0</p>				
				Eng. APPROVAL							
<p>No. DATE BY DESCRIPTION</p>				<p>APPROV. GOUGH</p>		<p>EDIT DATE:</p>		<p>CAD FILE :</p>			
<p>REVISION</p>											

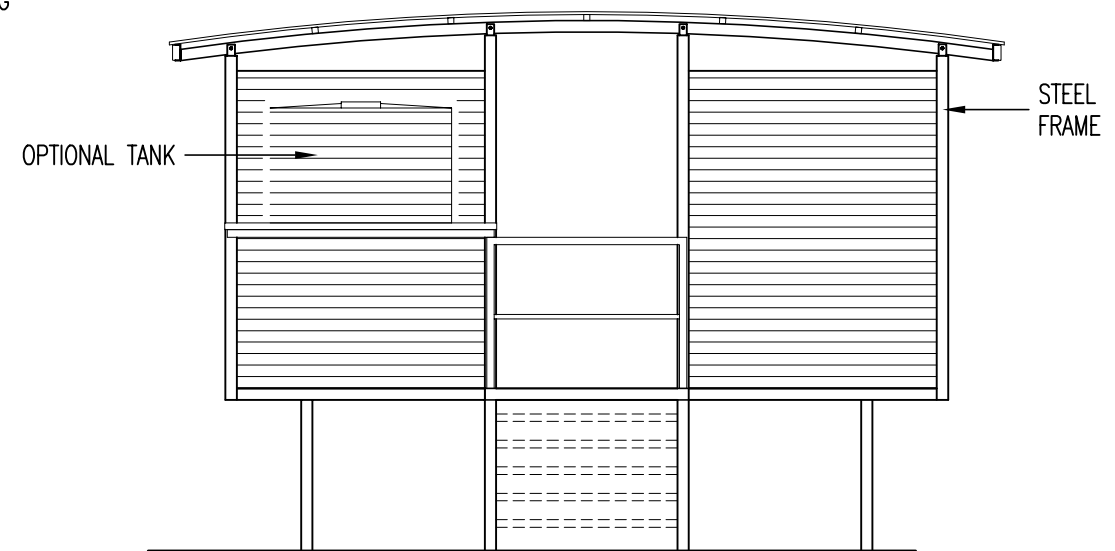
This drawing remains the property of Gough Industries Pty. Ltd. It is subject to Gough Industries Pty. Ltd.'s recall and must not be reproduced in part or whole or its contents divulged to third parties without prior written approval from Gough Industries Pty Limited.



**ELEVATION**  
(1:50)



**PLAN**  
(1:50)



**END VIEW**  
(1:50)

No.	DATE	BY	DESCRIPTION	GOUGH
REVISION				APPROV.



Gough Industries Pty. Ltd.  
833 Ingham Road  
Bohle, Townsville  
P.O. Box 1258, Aitkenvale, Qld. 4814.  
Telephone 07 47747606  
Facsimile 07 47747608  
A.C.N. 010 028 547

This drawing remains the property of Gough Industries Pty. Ltd. It is subject to Gough Industries Pty. Ltd.'s recall and must not be reproduced in part or whole or its contents divulged to third parties without prior written approval from Gough Industries Pty Limited.

<b>DRAWN</b>	Signature	Date
<b>DRN. CHK</b>	AGE	21-09-01
<b>ENGINEER</b>		
<b>ENG. CHK</b>		
<b>SUBMITTED FOR APPR.</b>		
<b>Eng. APPROVAL</b>		

PREFABRICATED AMENITIES BUILDING  
'EASTBROOK' EB-8C

SCALE: AS NOTED	A3	Gough Plastics Drg. No. EB-8C-101	0	REV
EDIT DATE:	CAD FILE :			